



2 Lime Tree Court, Ainley Top, Huddersfield, HD2 2EB

£725 PCM

- MODERN GROUND FLOOR APARTMENT
- TWO BEDROOMS
- ALLOCATED PARKING SPACE

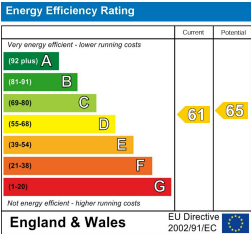
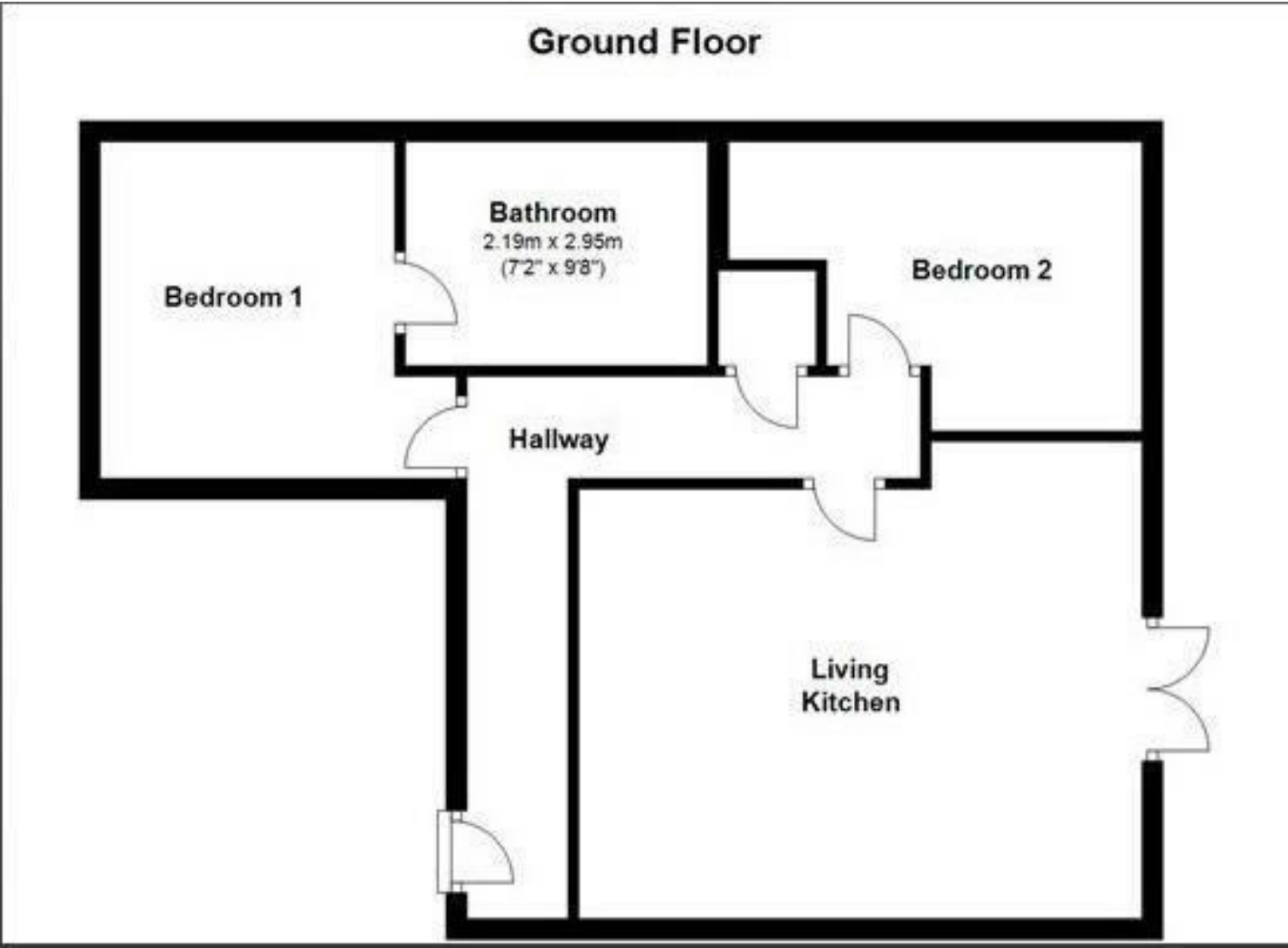
- LIVING KITCHEN WITH INTEGRATED APPLIANCES
- BATHROOM WITH FOUR PIECE SUITE

bramleys

*****MINIMUM SIX MONTH LEASE*****

This modern luxury ground floor apartment is offered to let on an unfurnished basis. Accommodation briefly comprises entrance hall, lounge/kitchen with integrated appliances, two bedrooms, master with walk in wardrobe and bathroom with four piece suite including shower cubicle. The property also benefits from underfloor heating, store cupboard which houses a washer/dryer and access to the development is via secure electronic gates. Externally there is an allocated parking space and visitor parking. Bond £836.00

*****SORRY NO PETS OR SMOKERS*****



CONSUMER PROTECTION FROM UNFAIR TRADING REGULATIONS 2008

Bramleys, for themselves and for the Vendors or Lessors of this property, whose Agent they are, have made every effort to ensure the details given have been prepared in accordance with the above Act and to the best of our knowledge give a fair and reasonable representation of the property. Please note:

1. There is a six inch measurement tolerance, or metric equivalent, and the measurements given should not be entirely relied upon and purchasers must take their own measurements if ordering carpets, curtains or other equipment.

2. None of the mains services, i.e. gas, water, electricity, drainage or central heating system (if any) have been tested in any way whatsoever. This also includes appliances which are to be left insitu by the vendors.

PURCHASERS MUST SATISFY THEMSELVES AS TO THE CONDITION AND EFFECTIVENESS OF ANY SUCH APPLIANCES OR SERVICES.

FLOOR PLANS NOT TO SCALE - FOR IDENTIFICATION PURPOSES ONLY